

# 3D PREDICT™

## CHEAT SHEET

### FOR O.R. STAFF

#### IMPORTANT NOTES:

Ship ASAP after collection;  
store at 4°C if same-day  
shipping not possible.

Place **ORANGE** Saturday  
Delivery sticker on shipping  
bag if shipping on Friday.

- Media vials should be refrigerated upon receipt; place Kiyatec gel packs in the freezer
    - Media vials are stored: \_\_\_\_\_
    - Kiyatec gel packs are stored: \_\_\_\_\_
    - Styrofoam™ packing kits are stored: \_\_\_\_\_
- If preferred, the Kiyatec gel pack can be stored inside the Styrofoam packing kit in the freezer**
- UPS Healthcare™ Shipping Pak and Labels are stored: \_\_\_\_\_
- Prior to the case, remove media-filled vial from refrigerator
    - Check the expiration date on the media
    - Media should stay refrigerated or cold until the tissue is collected
  - Place tumor tissue in collection vial
  - Immediately fill collection vial to brim with transport media
  - Place lid securely onto filled vial (wrap seam with Parafilm® if available)
    - Check to ensure lid is not cross threaded
  - Label collection vial with patient information sticker
  - Place vial and absorbent material in biohazard bag; close securely
  - Place biohazard bag into Styrofoam container with the Kiyatec gel pack
  - Secure lid of Styrofoam container with rubber band
  - Place in cardboard mailing box
  - Place box and requisition form in provided UPS® U3373 Laboratory Pak
  - Attach UPS Healthcare Shipping Label
  - Place Laboratory Pak in UPS Healthcare pick-up location: \_\_\_\_\_

# KIYATEC WORKFLOW

## 3D PREDICT GLIOMA



### PREPARATION

#### REMINDER: Kiyatec Requirements

- $\geq 0.1$  g minimum of fresh, biologically active tissue
- Tissue to be immersed and transported ONLY with Kiyatec media

**DO NOT use formalin | DO NOT freeze**



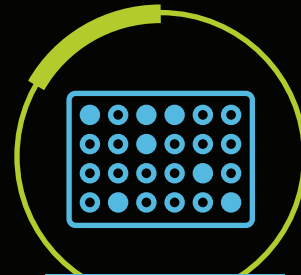
### TRANSPORT

- Requires transporting tissue to Kiyatec overnight within 24 hours of collection using Kiyatec-provided shipping kit
- UPS Healthcare Shipping



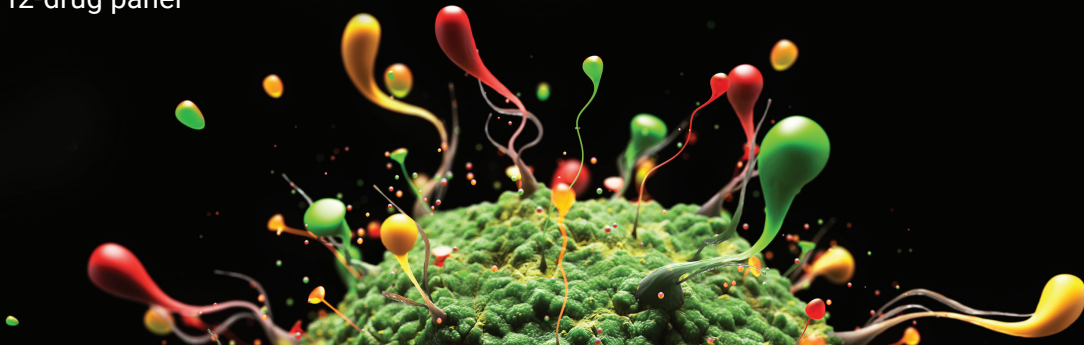
### KIYATEC LAB

- Tissue processed immediately upon receipt
- Validated cell culture processes cultivate and test patient tumor-specific responses with 12-drug panel



### REPORTING

- Patient-specific report delivered via HIPAA-compliant Portal in 7-10 days
- CLIA certificate #42D2130169



Every *body* is unique and cancer treatment should be too.  
Visit [Kiyatec.com](https://kiyatec.com) or contact us at [info@kiyatec.com](mailto:info@kiyatec.com) or call **864.293.7097** for more information.